

# Project Mentor

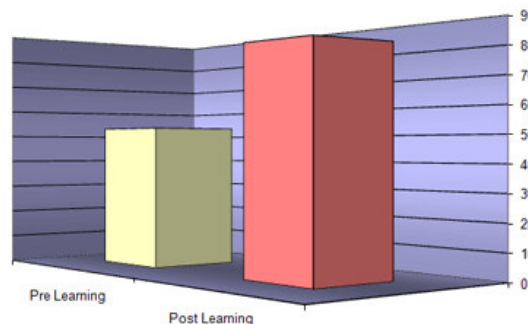
## Create your own Personal Learning Plan

### How Project Mentor lets you test your skills, knowledge and abilities to meet your own personal learning needs

Not only does Project Mentor teach you the best way to use Microsoft Project; it tests your knowledge, skills and abilities as well. Pre-learning tests determine your current knowledge levels and help you to structure your learning. Post-learning exercises and examinations test what you know about Microsoft Project and how you are able to use Microsoft Project to its greatest potential.

Project Mentor's Personal Learning Plan (or PLP) helps you structure just what you need to learn, optimizing the use of precious time in the process. Written by acknowledged subject matter experts, concise questions evaluate what you already know. Sophisticated score weighting advises you of strengths and weaknesses. If you are looking to become a Microsoft Certified Technical Specialist, use the Personal Learning Plan to test your knowledge and help you gain this valuable qualification.

- Use pre-learning tests to determine your existing knowledge and help you structure your learning.
- Consolidate your knowledge with post-learning exams.
- Use end-of-module exercises to test yourself on what you've learnt.
- Assess the knowledge you have gained.

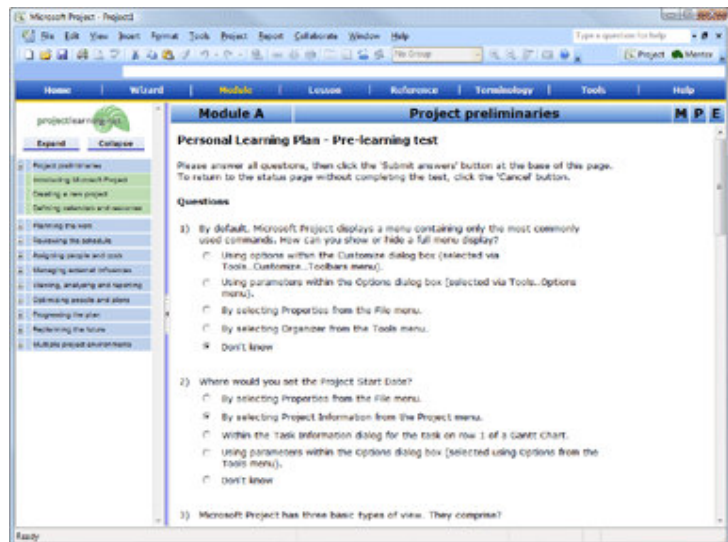


The graph above shows the average pre-learning (53%) and post-learning (83%) scores across all Project Mentor users. This indicates an overall knowledge increase of 30% and a relative knowledge increase of more than 50% before and after using Project Mentor.

Test your existing knowledge with a pre-learning assessment

Before you work through lessons and exercises, test yourself on what you already know. Simply log on to your PLP and answer a series of multiple-choice questions. Each question relates to learning content within the current module within Project Mentor and carries a weighted score.

The image to the right shows the pre-learning test for Module A, with answers to 2 of the 10 questions displayed.



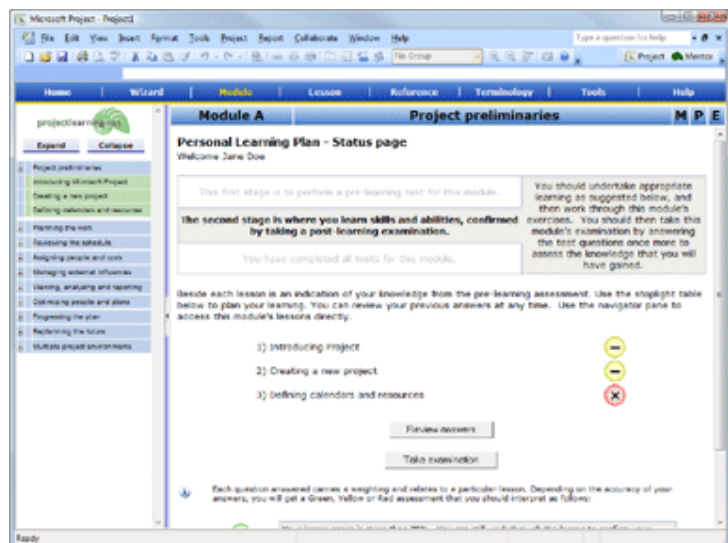
Assess your knowledge and structure your learning

Your pre-learning assessment provides you with a stoplight assessment of what you already know:

- A green indicator advises you that you have a good grasp of the concepts taught within a particular lesson.
- A yellow indicator advises that your knowledge of that lesson's content could be improved upon.
- If you have a red indicator, that lesson's content is probably unfamiliar to you.

Using the indicators, you can then plan and structure what you learn. You'll save valuable time by concentrating on subject areas that are either important to you or are ones that you're currently not familiar with. What's more, you can review the answers you gave at any time, helping you confirm what you are learning.

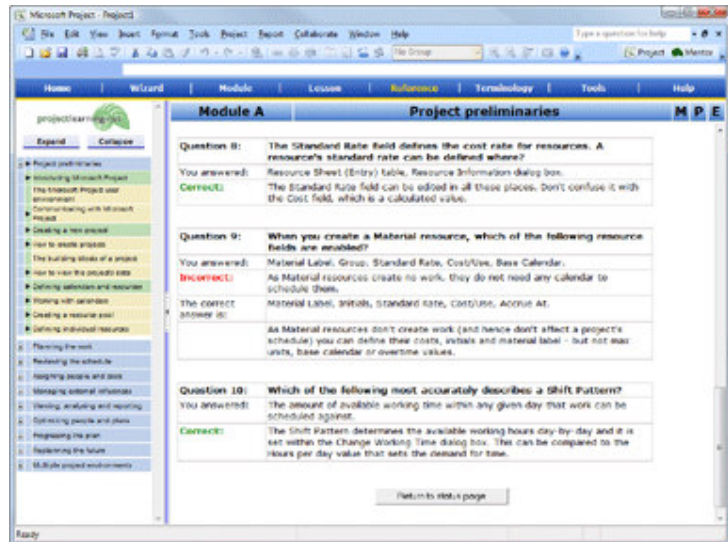
The image to the right shows Jane Doe's pre-learning assessment. She has scored between 50% and 75% for the questions that relate to lessons A1 and A2 and less than 50% for the questions that relate to lesson A3.



## Test yourself on what you've learnt

Once you've worked through your chosen lessons and references, evaluate the knowledge you've gained by taking a post-learning exam. You'll work through your questions again, seeing the answers you gave in the pre-learning assessment. Simply answer the questions to the best of your knowledge and then review each answer: If you answered correctly, you'll be told why an answer is correct. For any incorrect answers, you'll be told why your answer is incorrect, what the correct answer is and why that answer is correct. This invaluable advice will help you consolidate what you've learnt.

The image to the right shows Jane Doe being informed about correct answers for questions 8 and 10, with question 9 being incorrect. Note the explanations given beneath each answer.



## Assess your overall knowledge gains

At any time you can get an overall assessment of your current exam performance. Use the bargraph indicators to see how well you've scored; module-by-module. To help you understand more about particular knowledge areas, you can revisit your questions and answers at any time.

The image to the right shows Jane Doe's PLP status for modules A and B of Project Mentor. Jane can see high post-learning scores against the lessons within Module A and low pre-learning scores relating to the lessons that she has still to work through in Module B.

